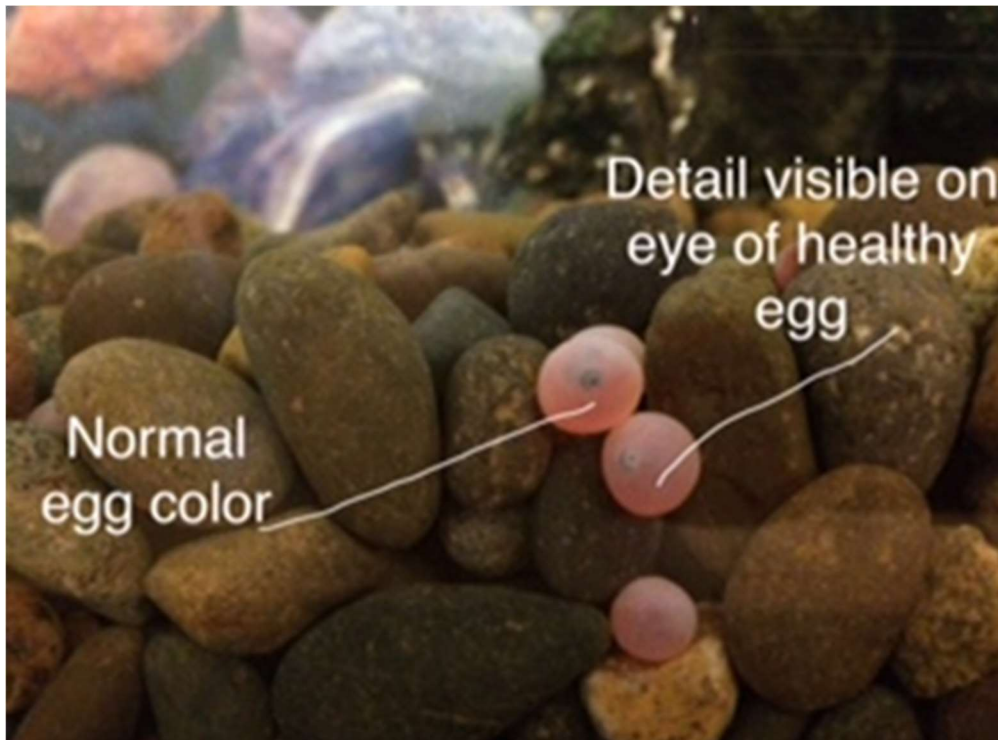


Eggs – Healthy or Not?

What does a healthy egg look like? How can you tell if it's a dead one that needs to be removed? Take a look at these photos to get a better idea of what's normal and what's not.



Healthy eggs will be pinkish clear in color, and you can see the embryo inside. You can see some detail visible on the eyes, and you can make out a faint body shape too.



This one is obviously dead. Dead eggs look “opaque” or “milky” in color. This one is also leaking part through the membrane, which has ruptured. It is more orange in color, too, but the main thing is that it becomes cloudy to whitish in color. Notice how the eyes look.



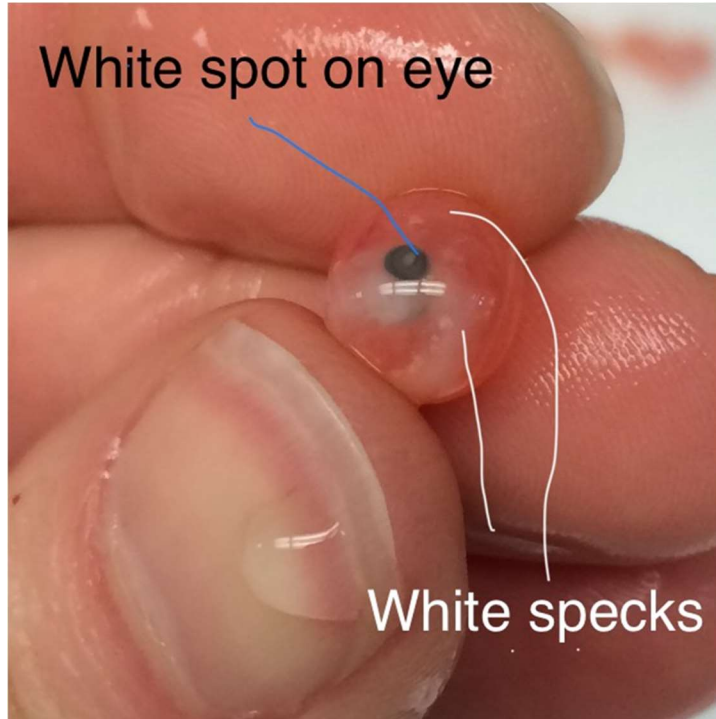
It's harder to spot dead eggs from above, but you can still tell this one is more opaque and white than the others. If your tank is completely covered, it's harder to spot the dead eggs.



Here is that same egg from the above photo, but now pulled out of the tank. Very obvious at this point, but again, it's hard to see from above, especially when the tank is covered.



Here is that same egg, but now in a cup with others that have been picked. See it in the bottom right? It's a much different color than the others in the cup, but all these eggs are dead eggs. This is where it gets harder to tell. Some eggs have not turned milky in color but are not going to make it. Let's take a closer look at one.



This is one of the dead eggs from the cup that has been picked. It is not completely opaque in color, but you can see some white spots throughout the egg where it has become damaged. It also has a white spot on the eye. Look back at the healthy egg photo. Remember that detail on the eye? This one looks much different. This one will not hatch.



This one is harder to tell. You can distinctly see the body as a white line through the membrane. It may begin to start turning the color of the dead eggs we saw above, more orange and milky in color. If you're unsure about an egg, leave it in the tank near the front, and check on it again in a few days. They will turn more opaque/milky if they are not going to hatch.



This is an empty eggshell... congratulations! You have an alevin!

Thanks to Columbia Springs for this information columbiasprings.org