

2021-2022 Annual Report

The 2021-22 school year marked the transition from at-home learning back to in-person learning. Being in person again meant that many teachers were coming back to the program after a year's hiatus. The SISS leadership team focused on adapting our field-trip offerings to align with public-health guidelines, and on helping teachers re-establish their tanks in time to receive eggs.

We welcomed 60 schools back into the program, including 10 new lead teachers. While that's below our program capacity of about 70 schools, having fewer allowed us to give extra attention to the large number of teachers new to the program, as well as to teachers feeling a little rusty after their pandemic break.

We are thankful for all the teachers and volunteers who kept this program alive in big and small ways during the 2020-21 school year. Their dedication helped us hit the ground running when school buildings re-opened Fall 2021 and led to an exciting year of working in person with students and teachers again.

Coordination

SIS-SEATTLE is a coalition of agency representatives and advocates that guides the program and provides resources to schools throughout the city. The Washington Department of Fish and Wildlife (WDFW) issues permits, records releases, and ties our program to others in the state.

SALMON
IN THE
SCHOOLS
SEATTLE



**Seattle
Public
Utilities**

ISLANDWOOD



**FAUNTLEROY
WATERSHED
COUNCIL**

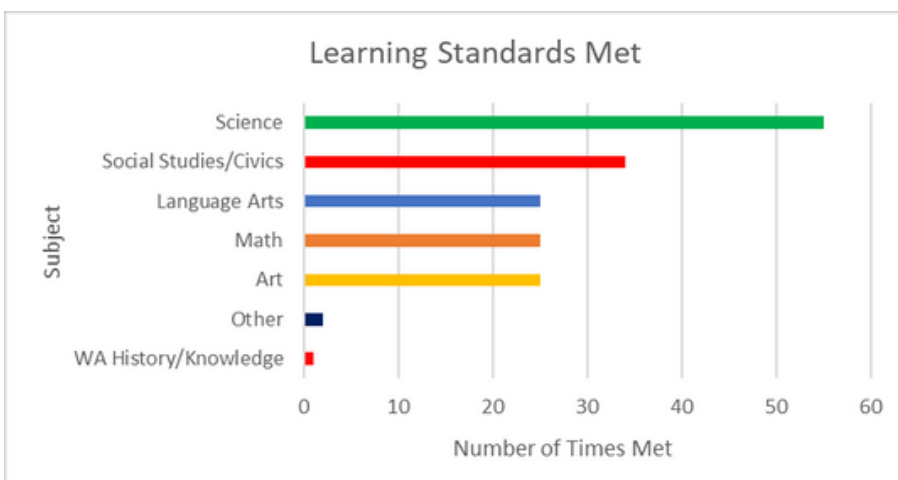
A technical specialist (funded by Seattle Public Utilities) and volunteers are readily available to troubleshoot equipment problems and help teachers confidently manage their tanks. The program receives eggs from the following area hatcheries:

Hatchery	No. of Schools
WDFW hatchery on Issaquah Creek	31
WDFW hatchery on Soos Creek	10
Suquamish tribal hatchery on Grovers Creek	19

Salmon Learning

Students from 60 public and private schools throughout Seattle participated this school year. At the end of term, we ask teachers to complete a survey about how they used SISS resources to engage their students inside and outside the classroom. The following information is pulled from that survey data.

Learning Standards Met



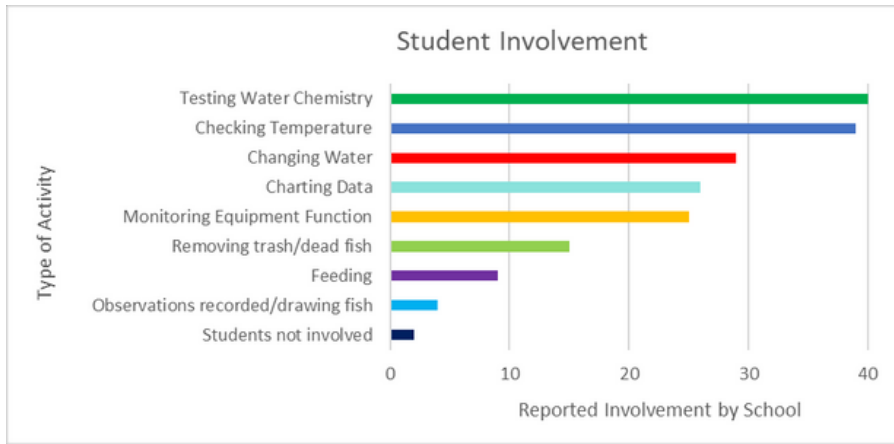
Teachers reported meeting multiple learning standards through this interdisciplinary program. Not surprisingly, science was the most common.

The salmon learning was a wonderful way to engage the students in science learning in the spring. Live streaming our release allowed even more of the student community to enjoy the wonder of their release. - Rita Gazewood, Our Lady of Guadalupe School



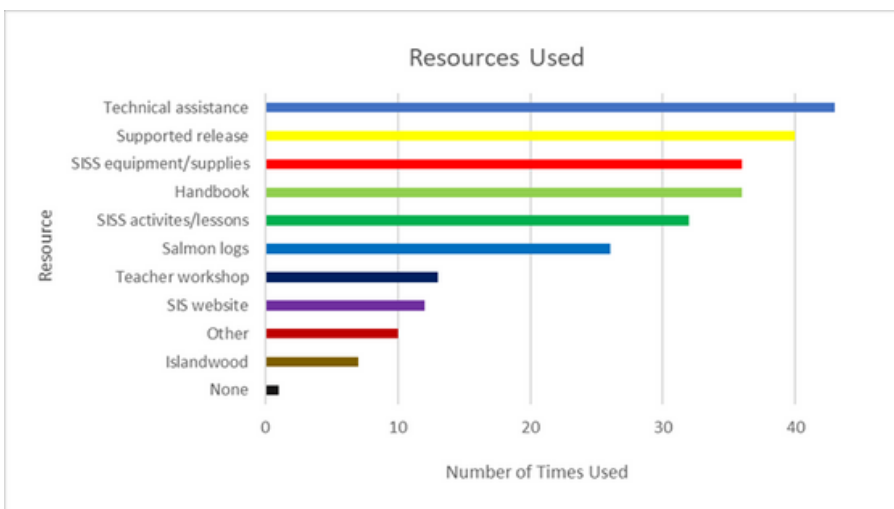
Fall 2021 Salmon Search educators shadowed a program at St. Alphonsus School as part of their training.

Student Involvement



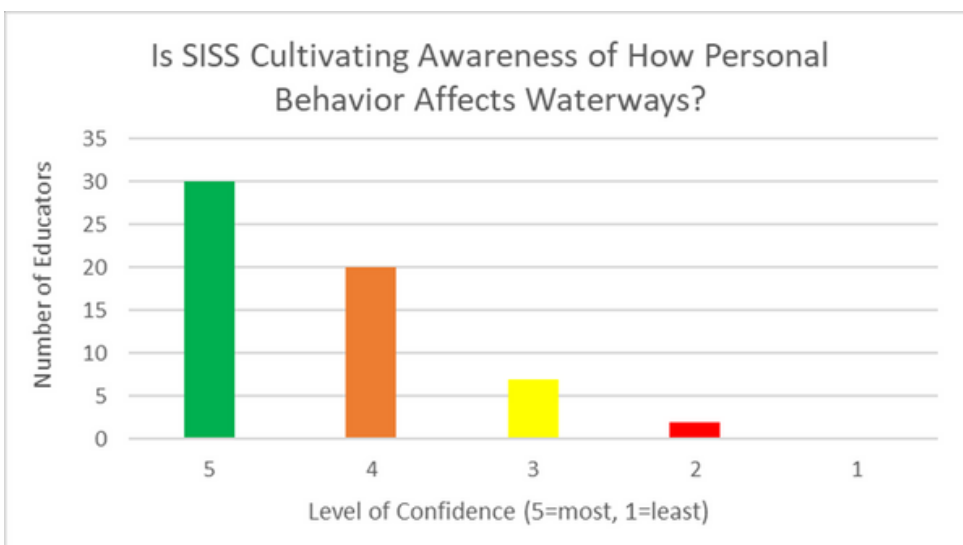
Teachers engage students in tank care in a number of different ways, the most common being testing water chemistry. Very few students were on the sidelines.

Resources Used



SISS offers many resources to support teachers in tank maintenance and student learning. The resource they tapped into most often was technical assistance (e.g., setting up tanks or fixing problems with tanks), with release support a close second.

Personal Behavior



We asked teachers how confident they were that SISS cultivated awareness among their students of how personal behavior affects waterways. Most affirmed that it did.

My class at Our Lady of Guadalupe participated in the salmon-rearing program back in the early 2000's. The experience I had with your program was certainly a formative one and contributed to my interest in pursuing a career in wildlife biology and conservation. - Ryan Lewis, restoration specialist with the Snoqualmie Indian Tribe



A student from the Fauntleroy Children's Center released her fry with volunteer Dennis Hinton



The Spillover Effect

Students aren't the only ones learning about salmon through SISS. In spring 2022 we had almost 300 chaperones join students across the city on their release field trips. These releases brought the rearing journey full circle for students, and helped bring the months-long salmon experience to life for family members.

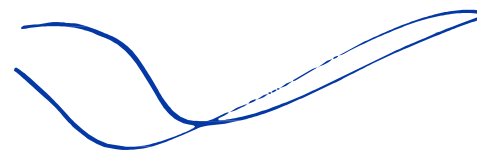
Release field trips often end with a question for the students: "What is one thing you can do to help keep our streams a healthy place for salmon to live?" The actions that they voice are often ones that also involve the adults in their lives, such as scooping up after their dogs, riding their bikes or walking more, getting cars checked for oil leaks, and using natural yard care practices. The SISS field trips are a special opportunity for families to learn about salmon together and then go home and put that learning into action.

New Partnership With IslandWood

We're excited to announce a partnership with IslandWood to help coordinate Salmon in the Schools-Seattle! Seattle Public Utilities has been working with IslandWood for many years to deliver stormwater-focused field programs to Seattle schools. This expanded partnership will increase our capacity to deliver programming, streamline registration for field trips, and help tie together the utility's youth stormwater-education work. The environmental education nonprofit will be taking over certain aspects of this program, including tank support for teachers outside of West Seattle and coordination of fall Salmon Searches and spring salmon releases.



As students released their fry into Fauntleroy Creek, volunteer Peet Draughon showed them the types of aquatic insects that would be food for their fish.



Farewell to Nancie

In 2022, we launched Nancie Hernandez on that big adventure called retirement. As technical support and area coordinator for Piper's Creek and Lake Washington schools, Nancie was a recognizable figure to all who have participated in SISS over the last few years, and a welcome sight to anyone at her schools who ever experienced tank troubles. We're so thankful for all of the work that Nancie put into SISS, helping to make it what it is today.

Hello to Dan

As we said goodbye to Nancie, we welcomed a new face to the SISS leadership team: Dan Hannafious. He took over the role of technical support and area coordinator at the beginning of the 2022-23 school year, and has been learning the ins and outs of his new role.

Dan's background includes providing informal education experiences in the classroom, in the field, and in community venues. He began his career with training in wildlife and fisheries sciences and was involved for years in fisheries supplementation, stream surveys, and habitat restoration. Dan eventually turned to education as a way to relate the story of salmon and its connection to the ecology and landscape of the Salish Sea. A true native to the Seattle area, he enjoys wildlife tracking, birding, watercolor painting, and enjoying the saltwater in a small boat with his wife.

A Special Thank You

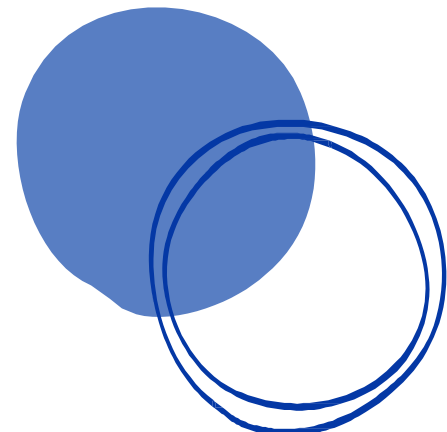
A special thank you goes out to Terry Thorsos from ScienceLinks, and a member of the former Salmon Education Alliance steering committee, who gifted SISS 13 new chillers in 2021. Her generous gift helped us replace outdated wand chillers with more reliable and efficient in-line chillers.



Nancie shows students a bat during a field trip in 2018



Dan Hannafious
Salmon in the Schools
Specialist

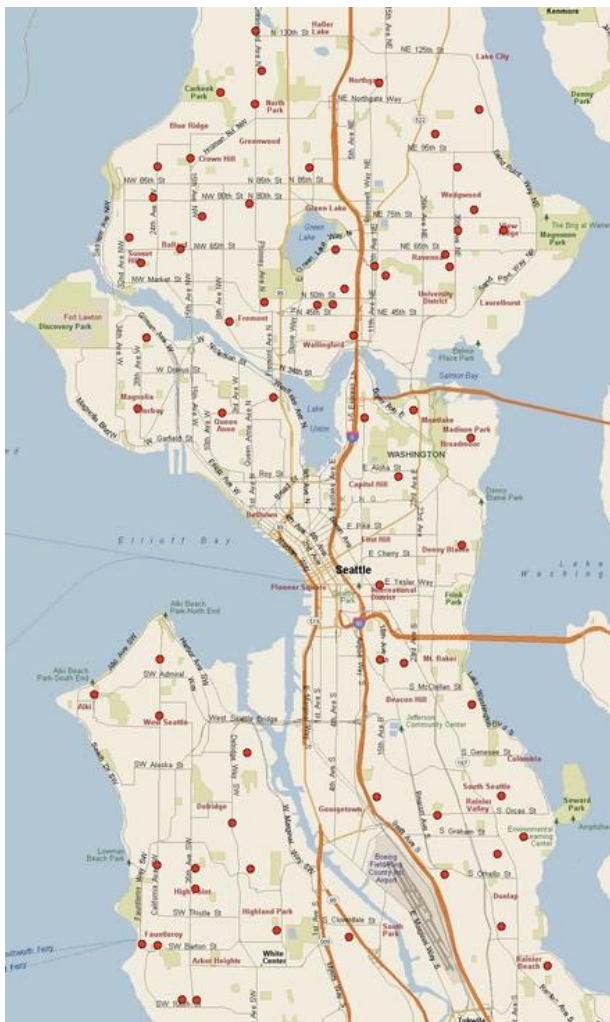


2021-22 Accomplishments

- Adapted the fall Salmon Search field trip for COVID and led programs on-site at 30 schools in fall 2021, reaching more than 1,400 students.
- Supported 18 salmon releases on Lake Washington, 20 at Carkeek imprint ponds, and 15 on Fauntleroy Creek, totaling nearly 2,000 students.
- Provided \$1,850 in reimbursements for bus transportation to and from salmon releases.
- Shifted our teacher training to a virtual format and created a YouTube channel where teachers could view tank tutorials online.
- Helped schools re-establish their salmon tanks after COVID-related building closures.

When I was driving a school bus, I would take kids on field trips to local streams to release the fry that hatched in their school. It was fascinating to watch how engrossed and interested the kids were and so caring about "their babies." This is a fantastic program for our world, ecosystem, and communities.

- comment on West Seattle Blog



Map of 2021-22 Participating Schools



Leadership Team

The program relies on administrative and on-the-ground expertise from these members of the leadership team:

Katherine Straus

Youth Stormwater Education Program Manager with Seattle Public Utilities

katherine.straus@seattle.gov

206-386-4621

Dan Hannafious

Salmon in the Schools Specialist

seasis.tech@outlook.com

206-218-9738

Phil Sweetland

Database and Technical Support volunteer

phil_sweetland@msn.com

206-938-4203

Judy Pickens

Volunteer Area Coordinator for Fauntleroy Creek

judy_pickens@msn.com

206-938-4203

David Koon

Carkeek Watershed Community Action Project volunteer

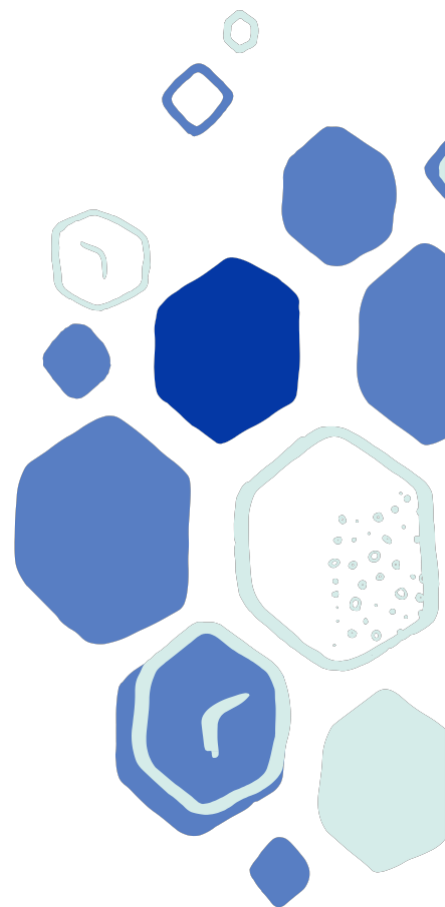
salmonprograms@carkeekwatershed.org

206-819-0614

Celina Steiger

Partnerships Manager with Islandwood

celinas@islandwood.org



We appreciate all SISS does to facilitate salmon education and bring this hands-on experience to students. - Josh Nicholas, program specialist, WDFW

